

RIMCO PRODUCT CATALOGUE

Empowering Your Enterprise
for Success



In association with



Mr S.V.Ramana Reddy



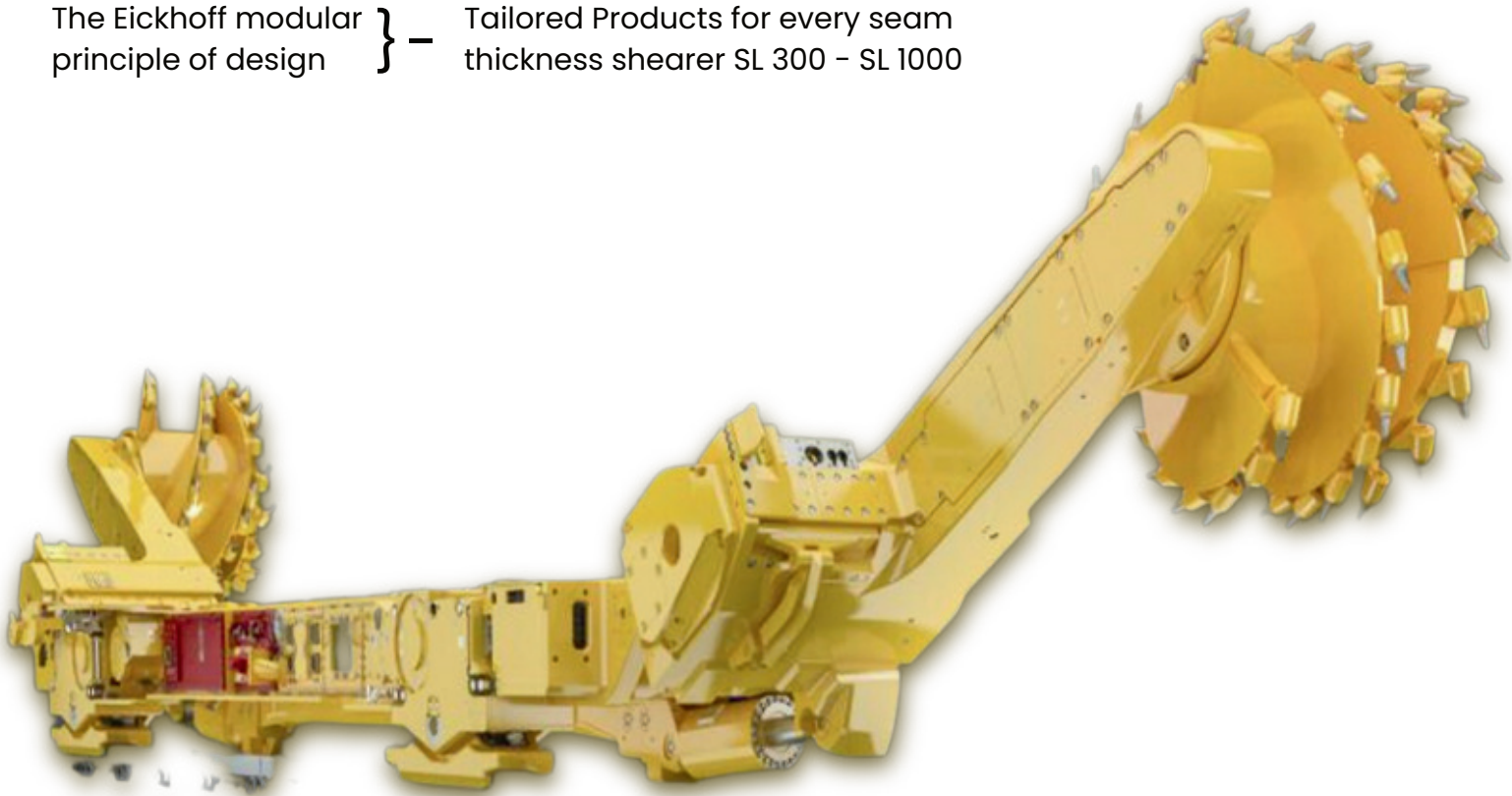
+91 9849064060



www.rimcoindia.com

LONGWALL SHEARER

The Eickhoff modular principle of design } – Tailored Products for every seam thickness shearer SL 300 – SL 1000



TECHNICAL DETAILS

Model	Cutting Range	Total Weight	Voltage / Frequency	Total Installed Power	Length	Width	Height	Cutter Drum Speed	Max. Haulage Speed
SL 750	1.8-4.8 m	70-80 tons	3300V / 50Hz	1894 kW	13,900-14,900 mm	2700-3400 mm	1250-2050 mm	32-50 rpm	51 m/min
SL 900	2.4-6 m	90-130 tons	3300V / 50Hz	2554 kW	15,200-15,900 mm	3100-3600 mm	1850-2700 mm	29-41 rpm	48 m/min
SL 1000	3.0-8.6 m	110-215 tons	3300V / 50Hz	2800 kW	15,200-17,300 mm	3400-4100 mm	2500-4150 mm	29-41 rpm	41 m/min

CONTINUOUS MINER



CM2H-30



CM2H-38



CM2H-37

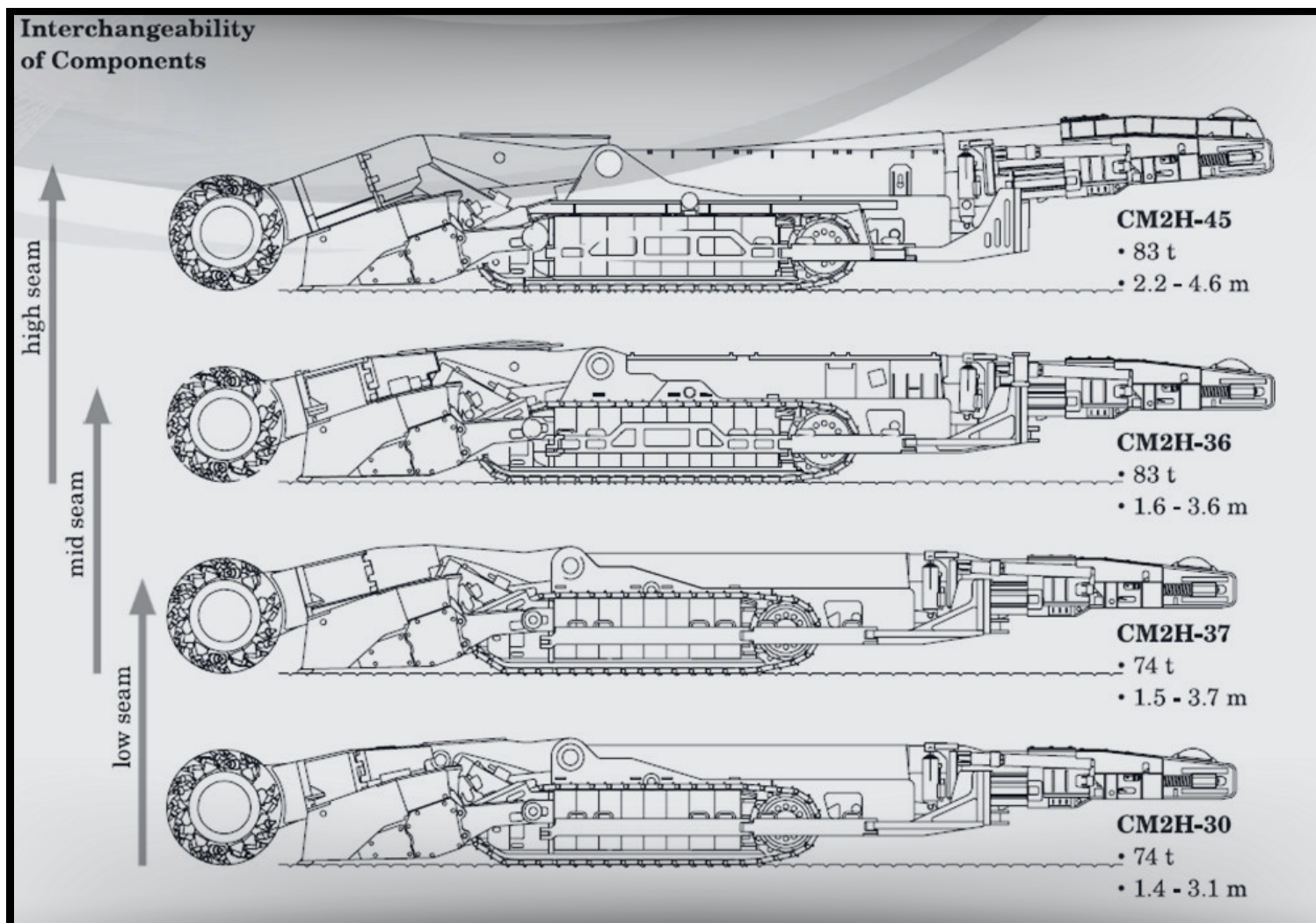


CM2H-45

TECHNICAL DETAILS

Model	Cutting Height	Machine Weight	Machine Body (W x H)	Cutting Width	Total Installed Power
CM2H-30	1.4–3.0 m	74 tons	3.05 x 1.20 m	3.50–3.65 m	620 kW
CM2H-37	1.6–3.7 m	74 tons	3.05 x 1.20 m	3.50–3.65 m	635 kW
CM2H-38	1.8–3.8 m	82 tons	3.05 x 1.30 - 1.50 m	3.50–3.65 m	655 kW
CM2H-45	2.2–4.5 m	82 tons	3.05 x 1.30 - 1.50 m	3.50–3.65 m	655 kW
Drum Diameter : 1.2 m & Ground Pressure : 200 kPa					

CONTINUOUS MINER



Interchangeability of components:

Four different types of Eickhoff Continuous Miners are available for cutting face heights from 1.4m up to 4.6m. All machine types share a large number of components that allow for interchangeability and optimized stock management. The variations in design and structure mainly affect the cutter boom and the main frame which are adapted to different cutting conditions.

Reduced maintenance cost due to interchangeability of major components, i.e., can be used for both right and left

“ **More Tons per Trip = MORE PROFIT** ”

Work Safely • Mine More • Haul More
Spend Less • Make More Profit

Designed to carry 12% larger carrying capacity than other traditional shuttle cars

HIGH CAPACITY (HC) – POWER OPERATED

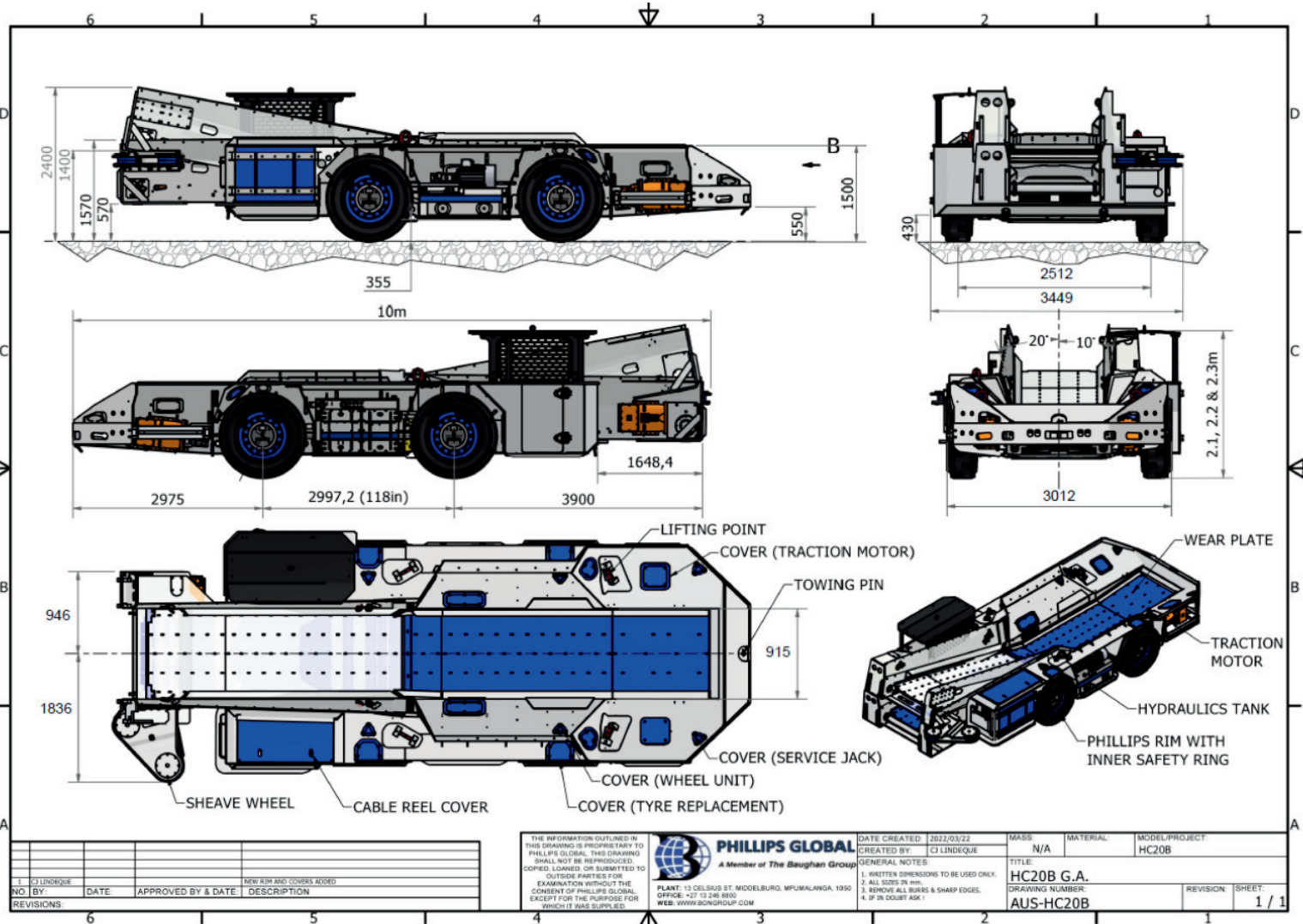


TECHNICAL DETAILS

Power Operated Cars	HC 14B	HC 16B	H 20B
Machine Height with Canopy	1443-1905mm	1537-1918mm	2100-2300mm
Overall Width	3683mm	3638mm	3449mm
Overall Length	9042mm	9334mm	9334mm
Tramming Speed Empty	9.6 km/h	9.6 km/h	8.8 km/h
Tramming Speed Load	8.5 km/h	8.5 km/h	8 km/h
Total Power (Pump, Conveyor & Traction)	1 x 22, 1 x 30, 2 x 55kW	1 x 22, 1 x 30, 2 x 55kW	1 x 22, 1 x 30, 2 x 85kW
Rated Capacity	14T	16T	20T
Traction & Conveyor	VFD Driven	VFD Driven	VFD Driven

HIGH CAPACITY (HC) – POWER OPERATED

GENERAL ARRANGEMENT



Phillips Global is the largest manufacturer of **shuttle cars** and **battery scoops** globally. With decades of experience, great innovation and exceptional personnel—Phillips Global is poised to be a leader in the manufacture, repair, rebuild and remanufacturing of underground mining equipment.

FREEDOM CAR (FC) – BATTERY OPERATED



Available with operator cabin on right or left side of the car as per choice

Models available: ✓ FC 12B ✓ FC 16B ✓ FC 20B ✓ FC 30B

TECHNICAL SPECIFICATIONS

Battery Operated Cars	FC 20B
Machine Height with Canopy	1600–2185mm
Overall Width	3327mm
Overall Length	9684mm
Tram Speed	0–8.8 km/h
Total Power (Pump, Conveyor & Traction)	1 x 10, 1 x 55, 2 x 55kW
Rated Capacity	20T
Traction & Conveyor	VFD Driven

Battery and Battery Charger



Battery charging time is 6–7hrs



A world leader in design and manufacturing of heavy mining machinery and equipment

“ We are **Professional**
 We **love** what we do
 We value long term **relationships**
 We will **work** with you
Quality second to none ”

FEEDER BREAKERS



Technical Details

Model	Minimum Mining Height	Minimum Mining Width	Output	Total Power	Maximum Operating Gradient	Traction Speed
OFB -1212	1600 mm	5500 mm	600 TPH	150 kW @ 1100V	1 : 8	10 m/min (flitting)

New Feeder Breakers :

- ✓ OFB-10
- ✓ OFB-25
- ✓ OFB-30
- ✓ OFB-1212
- ✓ OFB-30-IR Impact Breaker
- ✓ Open Cut

A collective of years of experience, and one of the best workforces in Australia, will provide you with the right outcome for your project, on time and within budget. Ontrak understand that not everyone has the same requirements from the same piece of Equipment, and therefore we tailor each machine to the exact customer requirements. Ontrak listen to what you want, and then create it.

CIRCUIT BREAKER

The Circuit Breaker is designed for switching and protection of three-phase electrical equipment and protection of the supply mine network.

Nominal Voltage	▸ 0,5-1,14/3,3-11kV
Nominal Current	▸ up to 315/630A
Nominal Off-Switching Current	▸ up to 31,5kA at 12kV
Nominal On-Switching Current	▸ up to 80kA at 12kV

Functions

- Battery connections
- Ability to work as a starter with frequent I/O cycles
- Data archiving and transfer among connected systems



TRANSFORMER SETS

The Transformer Set is designed for the transformation of high voltage to low voltage, for switching and protection of three-phase electrical devices, squirrel cage electric motors or for power supply and protection of underground power.

Power	▸ up to 3150kVA
Primary Voltage	▸ 3,3/6/10/11kV
Secondary Voltage	▸ 0,5/0,66/1/1,14/3,3/4,16kV

Secondary Side

With protected outputs

- up to 4 outputs

With integrated load center (Transwitch)

- up to 12 outputs (with possible electric reverse)
- outputs 127/230V, 5kVA



Functions

- Quick changeable module system
- Remote/local control
- Indication of all outputs, visualization
- Automatic loading setup parameters from Module of Parameters
- Archiving, data transmission to the surface via fiber-optic/phone pair

LOAD CENTERS

The Load Center is designed for the switching and protection three-phase asynchronous electric squirrel cage motors.

Nominal Voltage	▸ 0,5/0,66/1/1,14/3,3/4,16 kV
Nominal Current	▸ up to 1000A
Number of Outputs	▸ up to 15 (with possible electric reverse) ▸ outputs 127/230V, 5kVA

Functions

- Quick changeable module system
- Remote/local control
- Indication of all outputs, visualization
- Automatic loading setup parameters from Module of Parameters
- Archiving, data transmission to the surface via fiber-optic/phone pair



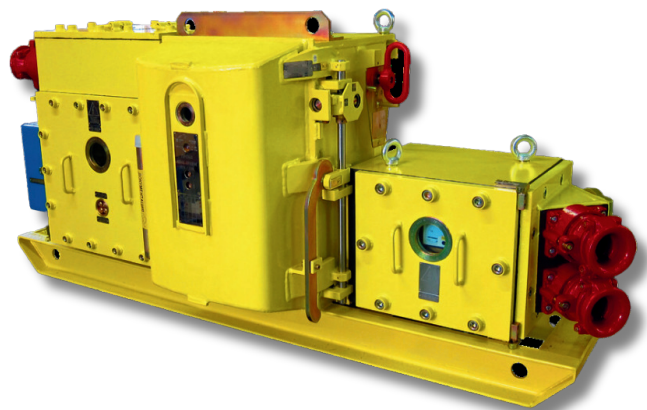
SOFT STARTS

The Soft Start is designed for the continuous starting and protection three-phase asynchronous electric squirrel cage motors.

Nominal Voltage	▸ 0,5/0,66/1/1,14/3,3/6kV
Nominal Current	▸ up to 800A
Number of Outputs	▸ up to 4 ▸ outputs 127/230V, 300VA

Functions

- Remote/local control
- Indication of all outputs
- Archiving, data transmission to the surface via fiber-optic/phone pair



FREQUENCY INVERTORS

The Frequency Inverter is designed for the continuous starting and protection three-phase asynchronous electric squirrel cage motors. The main application is for induction motors with variable speed operation – belt conveyors, fans, scraper conveyors, winches, etc.



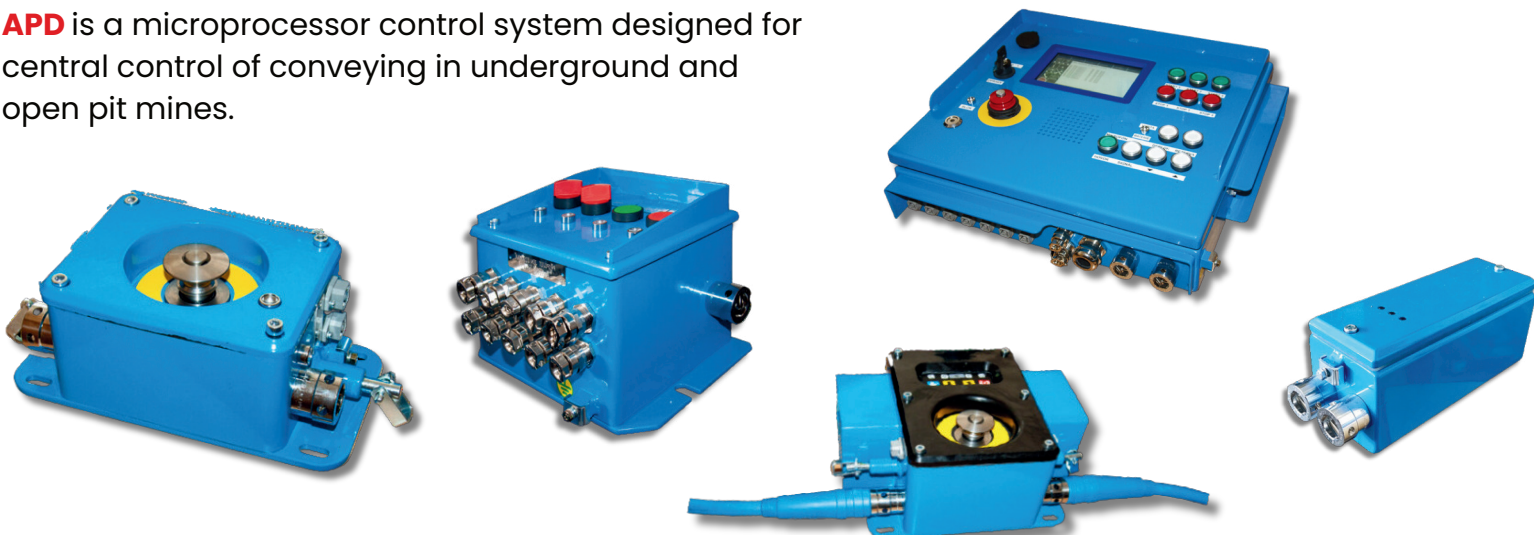
Nominal Voltage	▸ 0,5/0,66/1/1,14kV
Output Voltage Frequency	▸ 4-120Hz
Nominal Current	▸ up to 550A
Number of Outputs	▸ 1 or 2
Max. Power of Motors	▸ 2x 400kW (for 1-1,14kV)

Functions

- Closed water/air cooling system
- Engine braking by resistor
- Remote/local control
- Indication of all outputs
- Archiving, data transmission to the surface via fiber-optic/phone pair

AUTOMATIC CONTROL SYSTEM

APD is a microprocessor control system designed for central control of conveying in underground and open pit mines.



LED LIGHTS

The LED Lights are designed to illuminate the face and corridors of underground mines.



VACCUUM CONTACTORS

The Vacuum Contactor HR-VS is an electromechanically operated device determined for frequent switching of exclusively alternating current circuits in the range of closing and breaking currents corresponding to AC4 category.



JUNCTION BOXES & ELECTRIC MOTORS

The Junction Box is designed for connecting power cables.



The Electric Motors are designed to power of mining equipment.



OTHER PRODUCTS OF RIMCO

THIELE



Round Steel Chain

THIELE



Blockmaster

THIELE



S-Type Flight Bars with Strap / Bow

MICROMESH



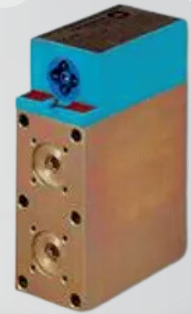
Last Change Filter Range

MICROMESH



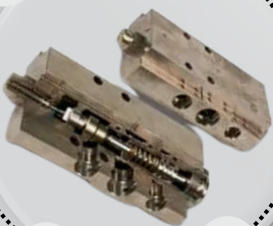
Gas Turbine Filter

TIEFENBACH



iE(A)27

TIEFENBACH



Check Valves

TIEFENBACH



Electrohydraulic Control System

TIEFENBACH



Pressure Valves

TIEFENBACH



ASG 5 (PMCR)



GET IN TOUCH



Mr S.V.Ramana Reddy



+91 9849064060



rimco@rimcoindia.com



www.rimcoindia.com

